

RETENTION BASINS FACT SHEET

Sometimes referred to as Wet Ponds or Wet Basins, Retention Basins are facilities intended to provide temporary storage and release of stormwater runoff to mimic predevelopment runoff characteristics. Unlike Detention Basins, Retentions Basins are designed with a stored volume surface elevation that is above the bottom elevation of the basin. Linings and other provisions may be necessary to ensure that collected and stored water is retained.

Areas with highly variable groundwater levels should be avoided due to the potential for the intended permanent water levels to drop during dry seasons, or basin linings floating as the groundwater level rises during wetter seasons.



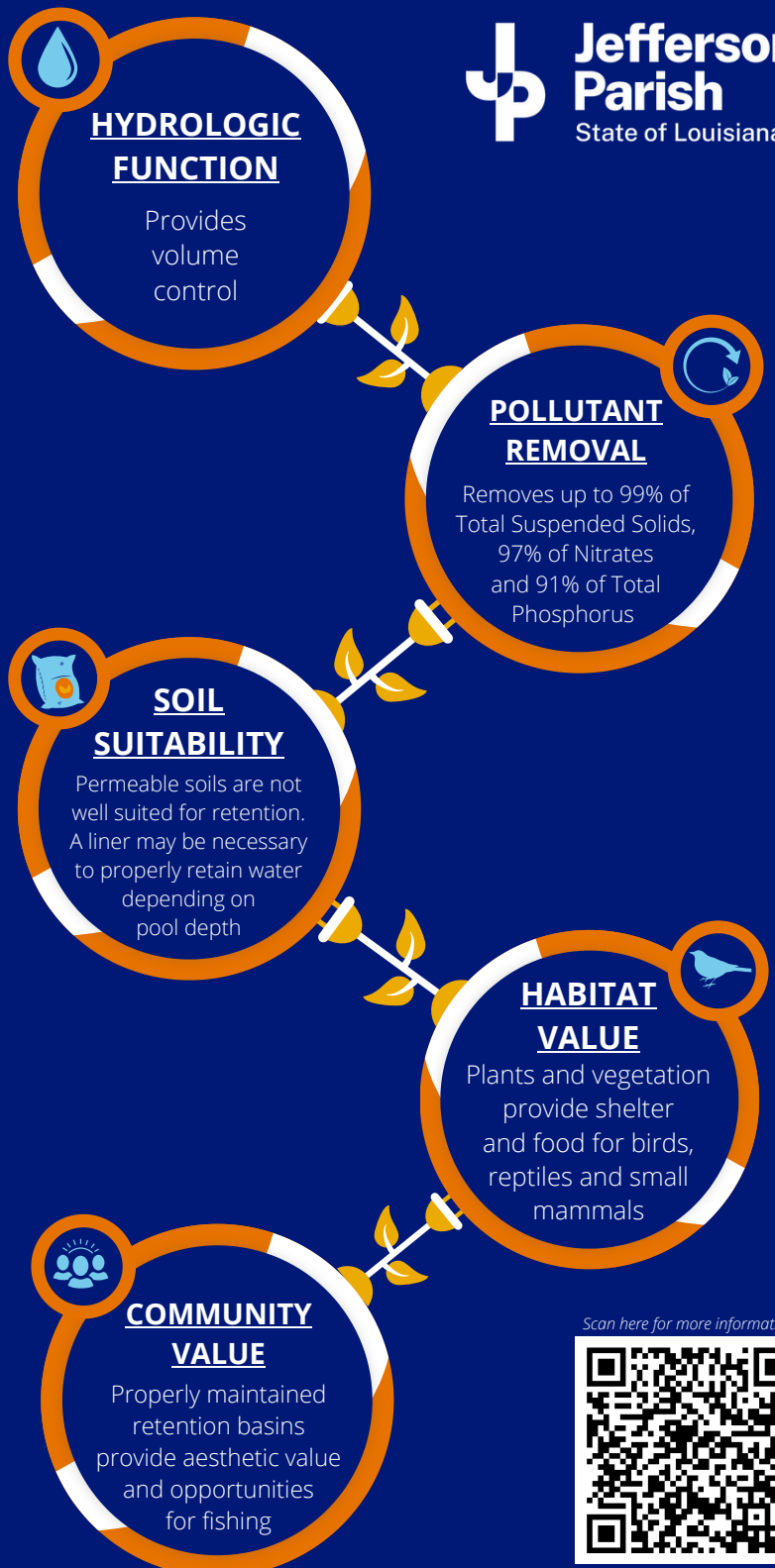
Retention Basin near a parking garage;
source: Southwest Florida, WMD, 2005



Recreational Retention Basin at Lafreniere Park;
source: LafrenierePark.org



Retention Basin in a residential apartment complex;
source: EPA, 2021



Scan here for more information

